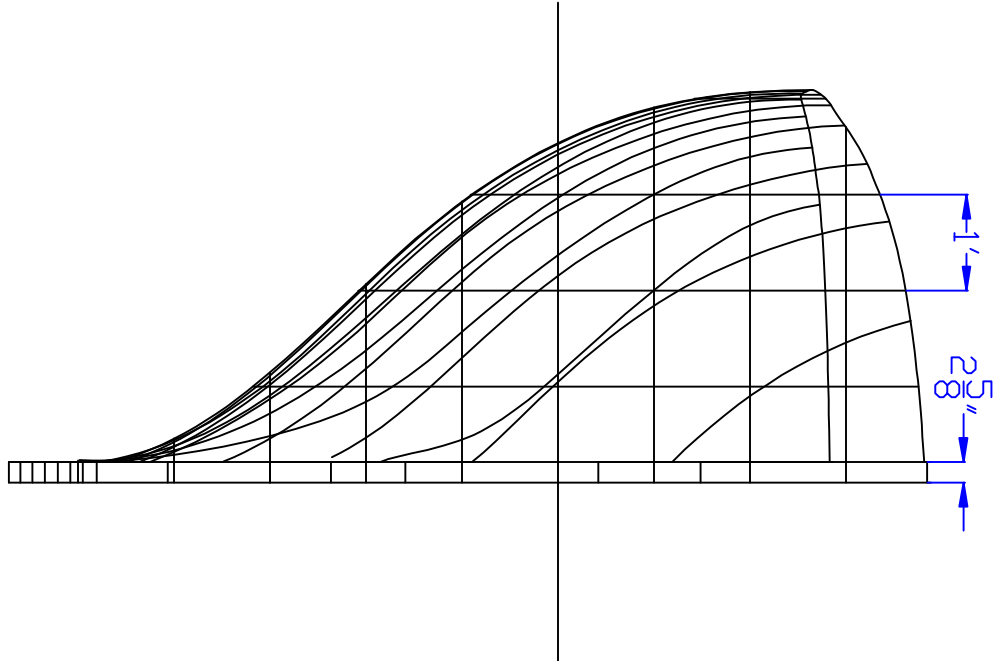
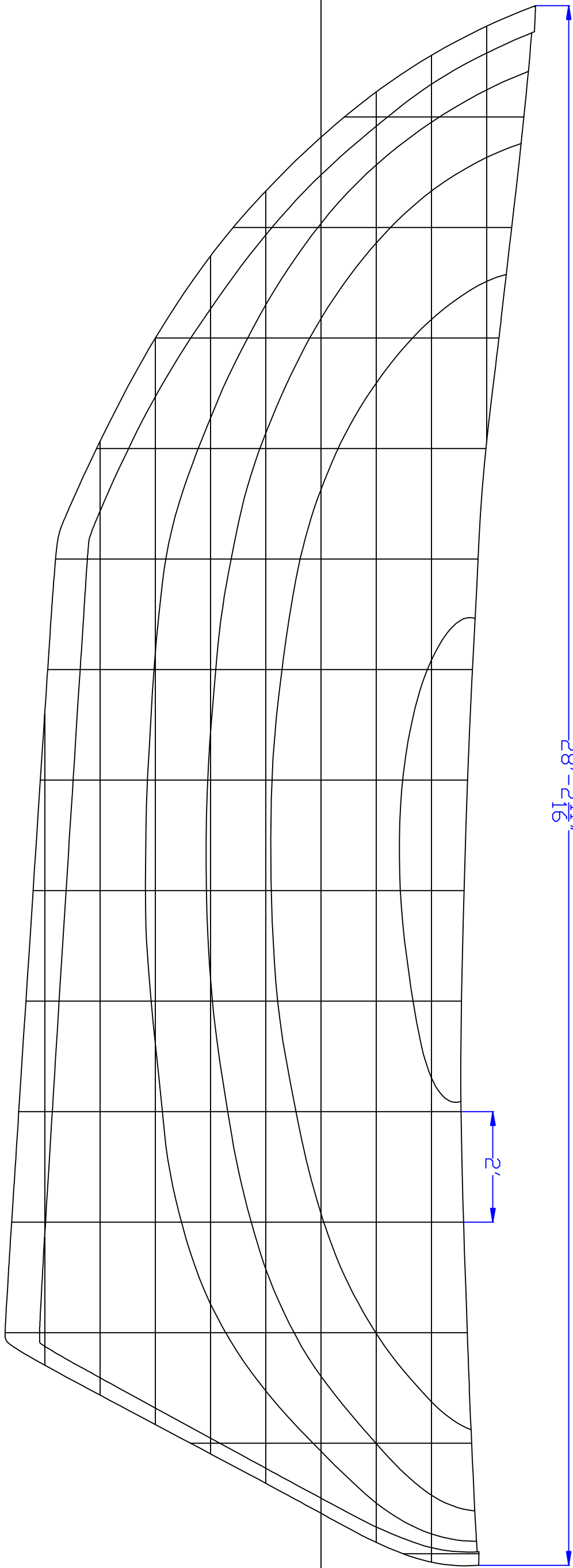
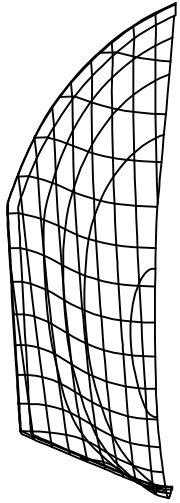


10'

28'-2 11/16"

2'

DWL



RADCLYFFE 28'
in the style of Mr. Colin Archer
drawing by TR Design
May 24 2010

Design by Peter Radclyffe

LDA = 28' 2.5"
LWL = 24' 11"
Beam = 8' 2.25"
Draft to DWL = 5' 8.625"
Displacement to DWL = 17,416
lbs
LCG = 15' 5.5" from tip of
stem
VCB = 18" below DWL
WS = 268 sq ft
WPA = 131 sq ft
PPI = 700 lbs

SCALE: 1/2" = 1'0"